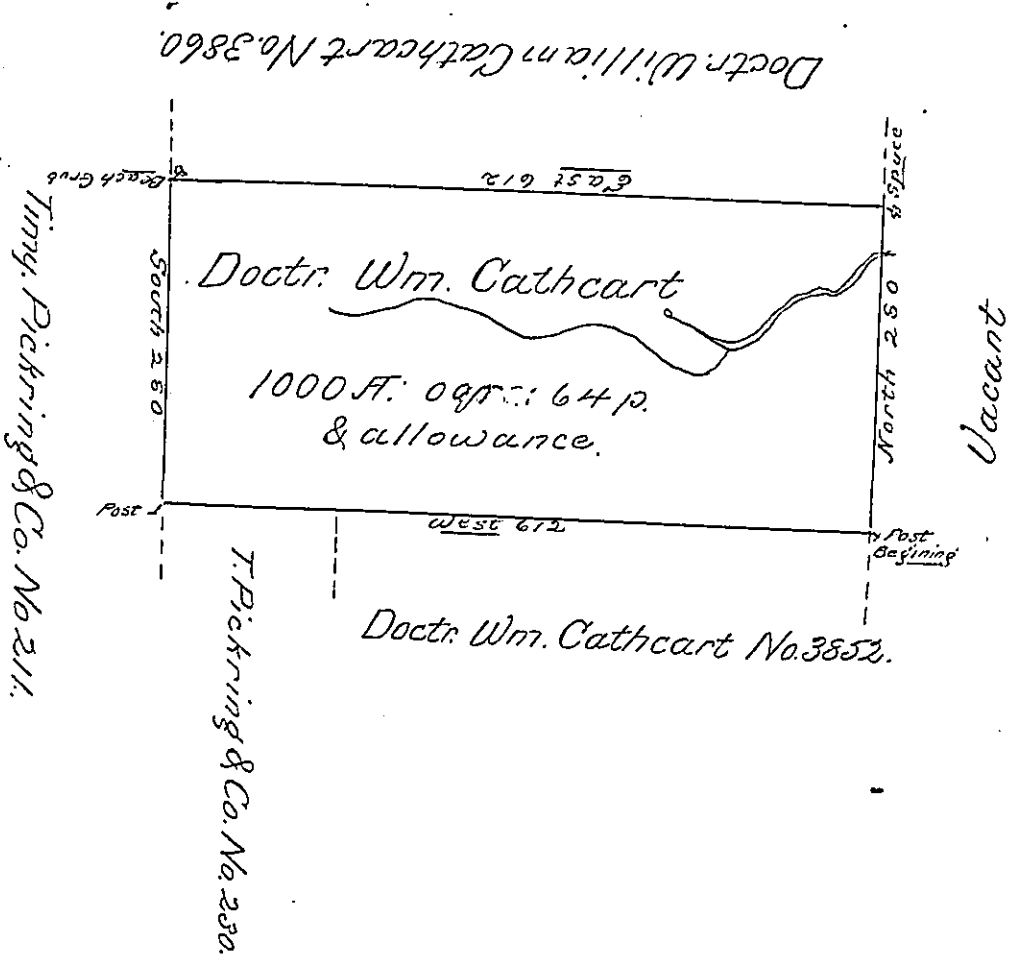


No. 3853)



The Draught of a Tract of Land
 Situate on the waters of Sandy Lick Creek in the late
 Purchase _____ in the County of Northumberland
 containing One thousand & ten acres & Sixty four perches
 with the usual allowance of Six p^{ch}. for roads Survey'd
 June 17th. 1793 on Pursuance of a Warrant No. 3853 granted
 to Doctr. William Cathcart bearing Date at Philada. May
 6th. 1793.

by Wm. P. Brady D.S.

To Danl. Brodhead Esqr. }
 Surveyor General. }

IN TESTIMONY that the above is a copy of the original remaining on file in
 the Department of Internal Affairs of Pennsylvania, made
 conformably to an Act of Assembly approved the 16th day of
 February, 1833, I have hereunto set my Hand and caused
 the Seal of said Department to be affixed at Harrisburg,
 this fourth day of September 1900

James W. Patton
 Secretary of Internal Affairs.